

Ontario Ministry of Agriculture, Food and Rural Affairs

Resources for Rural Economic Development

Rick Berthiaume, Manager
Economic Development Resources Team

AMO Annual Conference 2019

OMAFRA's Regional Economic Development Initiatives

Creating Strong Rural Communities

- Analyst
- Agriculture Economic Development
- Business Retention + Expansion (BR+E)
- First Impressions Community Exchange (FICE)
- Downtown Revitalization (DR)

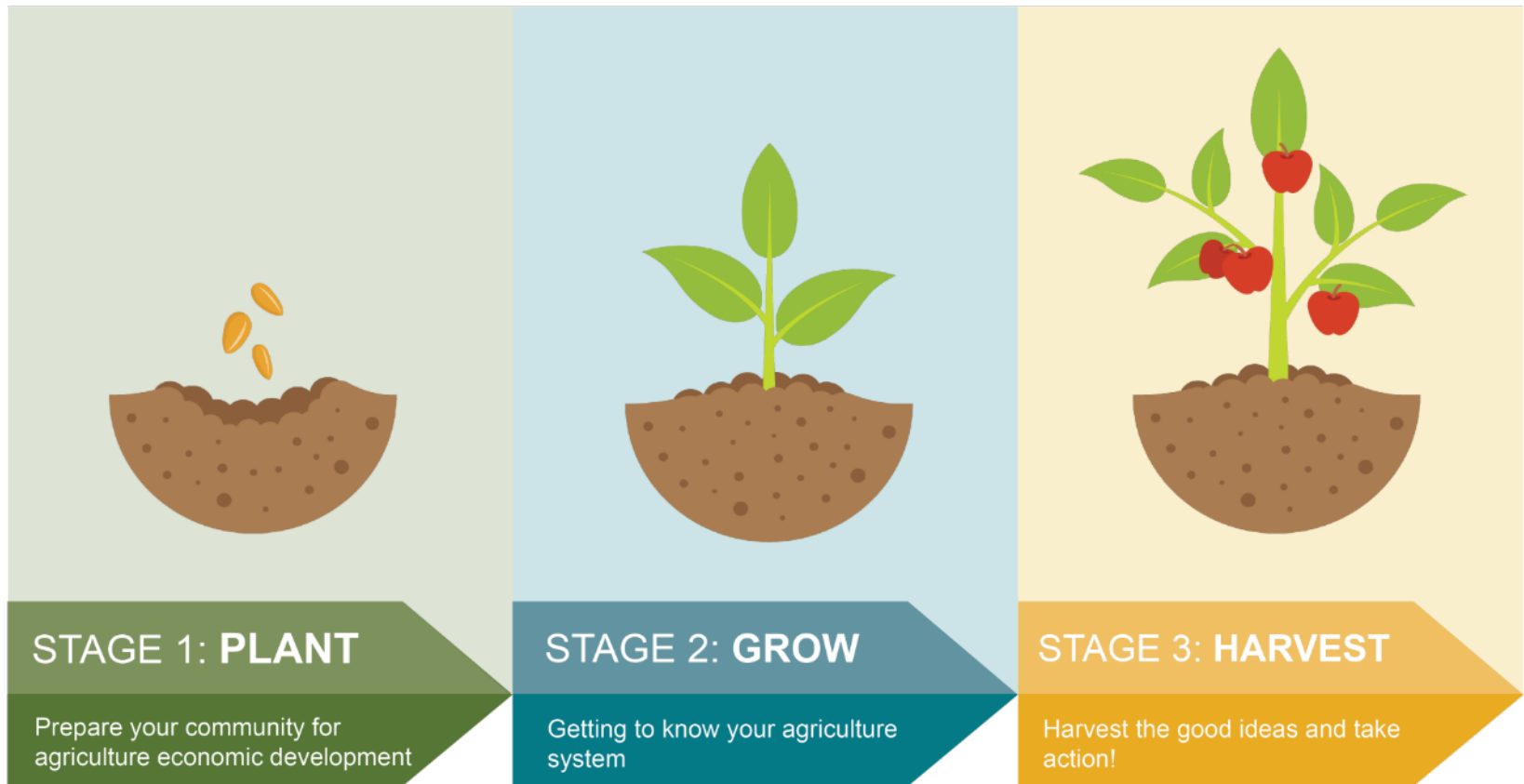
Analyst

Economic Analysis Software for Regional Economies

- Analyst is a web-based tool that provides data on regional economies and workforces
- Data is provided in an accessible and easy to use format
- Communities and organizations can use the data to make informed decisions to build and strengthen their economy

Agriculture Economic Development

Support for Your Local Agriculture System



Business Retention + Expansion (BR+E)

Proactive Engagement of your Business Community

- BR+E is a structured action-oriented, community-based approach to business and economic development
- Promotes job growth by helping communities learn about issues as well as opportunities for local businesses
- Strategies developed based on needs/issues of local businesses



First Impressions Community Exchange (FICE)

Analysis of Your Community from a Visitor's Perspective

- FICE is a structured and cost-effective process that pairs you up with another community to identify impressions your community makes when people visit for the first time
- Allows community to identify strengths and weaknesses, and to prioritize areas of improvement to better attract tourists, residents and investors
- Engages you community's volunteers, and builds consensus among organizations focused on economic development and revitalization

Downtown Revitalization (DR)

Renewing Your Community's Downtown Area

- DR is a process of improving the economic, management, physical and social well-being of a community's traditional town centre,
- Balances actions across economic development, physical improvements, leadership and management, and marketing and promotions
- Promotes that the benefits of a healthy downtown have community-wide impacts



For more Information

- OMAFRA has a number of multidisciplinary teams, which include:
 - Economic Development Specialists who are centered on the development of economic tools and resources to support community economic development
 - Agricultural subject matter experts (agronomy, livestock, engineering, pedology) and experts in knowledge translation and transfer best practices
- These specialists collaborate with and leverage private and public partnerships with researchers, stakeholders and organizations to develop and deliver best practices and technical content to clients and professionals.

For additional Information:

Contact the Agriculture Information Contact Centre:

1-877-424-1300

ag.info@ontario.ca

Visit our website to request resources in any of these programs:

www.Ontario.ca/rural

Thanks